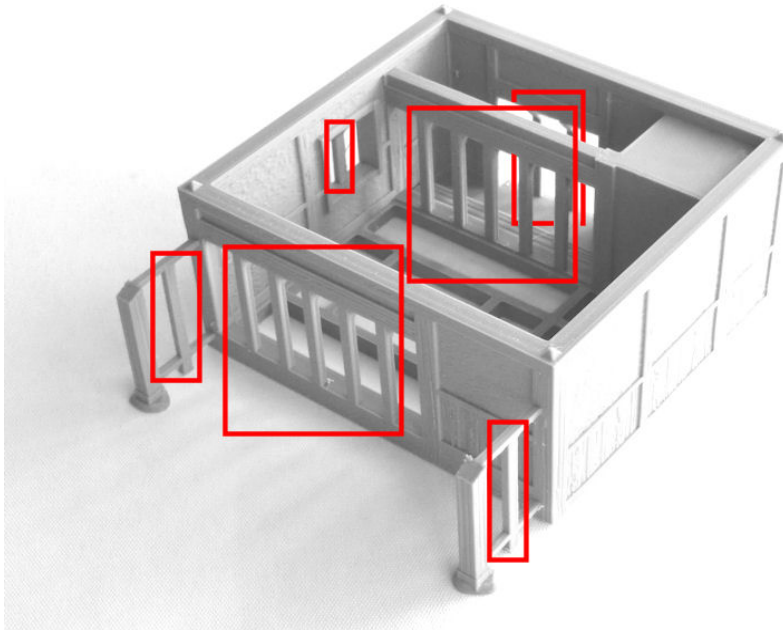


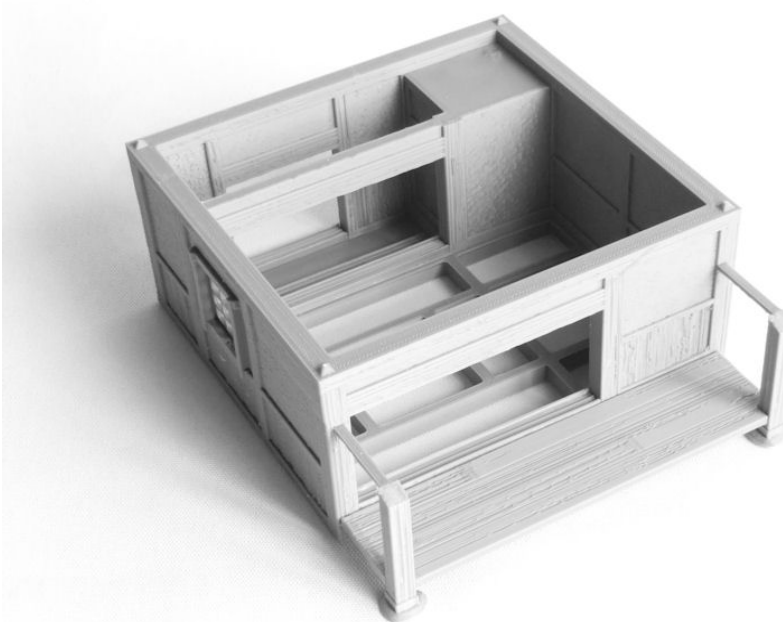


SAMURAI LORD'S HOUSE - GUESTHOUSE #1

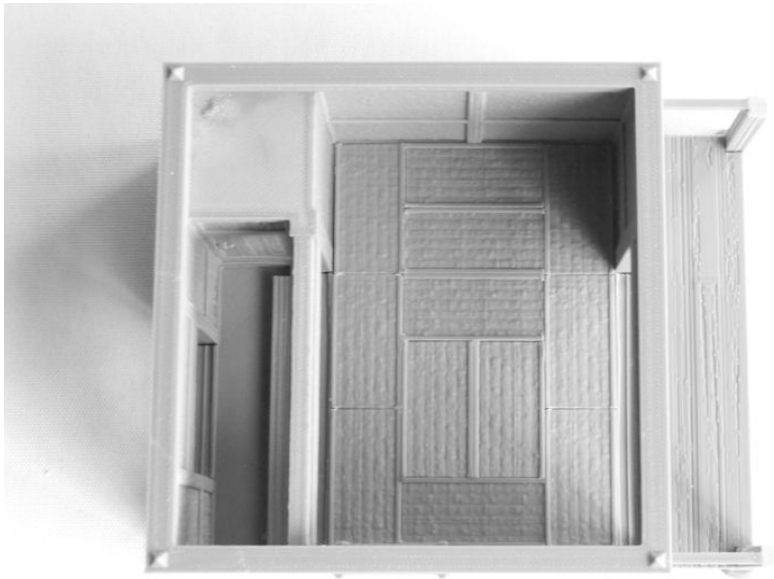
1. *Guesthouse1.STL* (remove door/window print supports, in red)



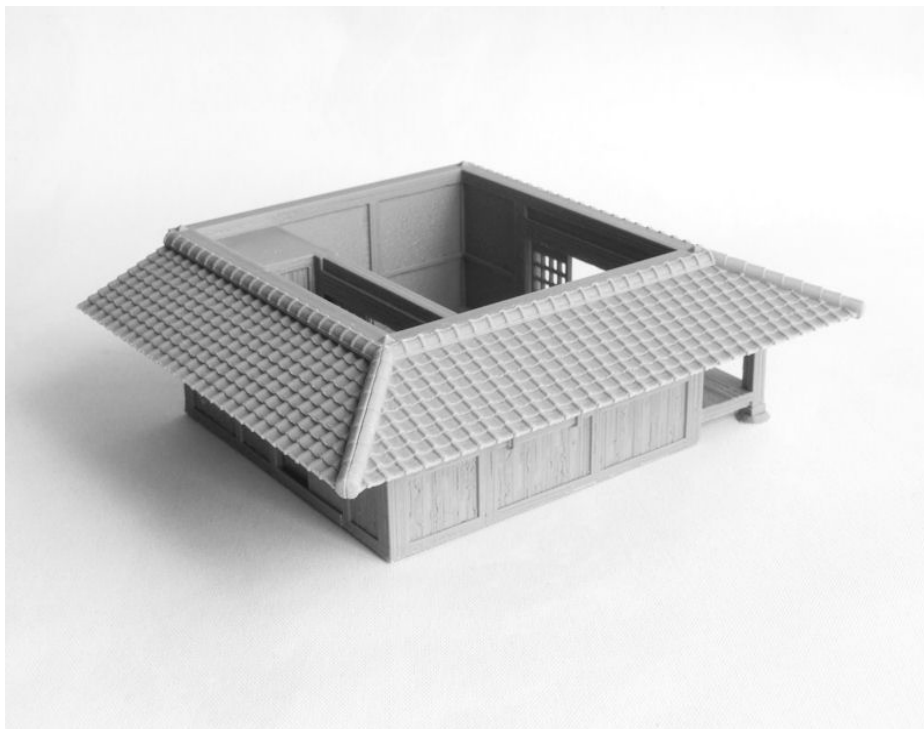
2. *Guesthouse1-extras.STL*



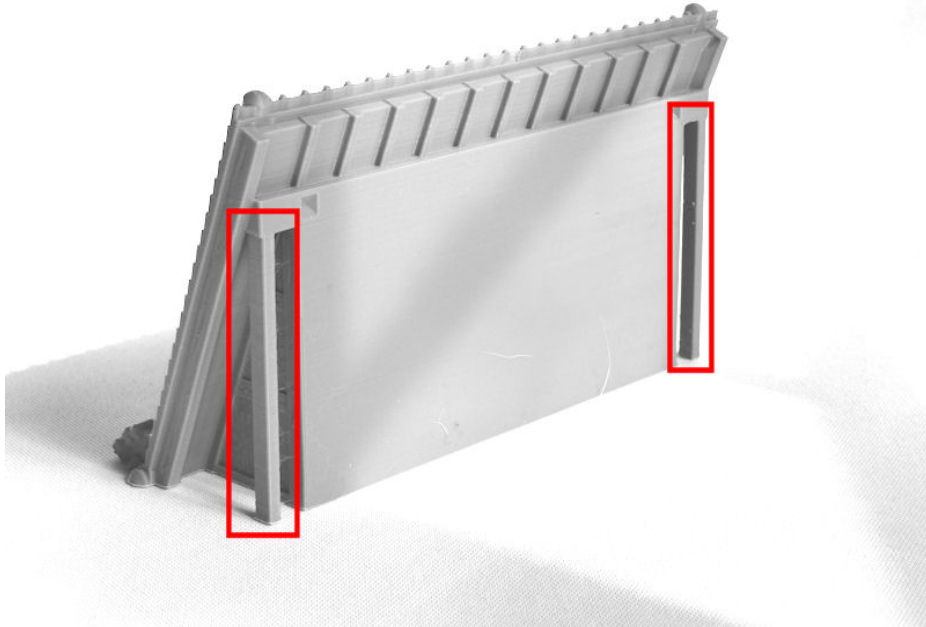
3. *Tatami.STL* x 12



4. *Guesthouse1-subroof1.STL*
Guesthouse1-subroof2.STL
Guesthouse1-subroof3.STL



5. *Guesthouse1-roof.STL* **x 2** (remove print supports, in red)

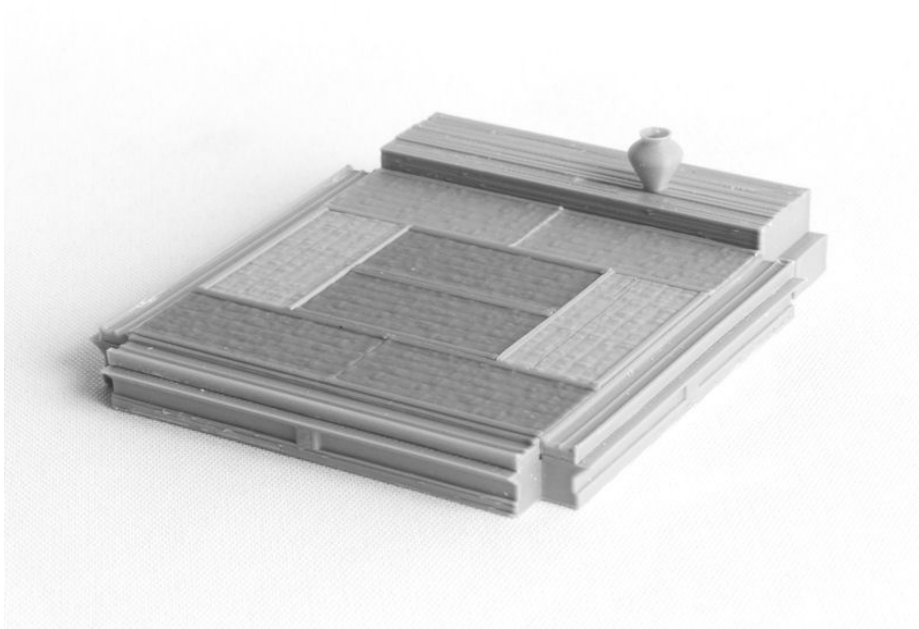


6. *Guesthouse1-frontdoor.STL* **x 2**
Guesthouse1-ShojiDoor.STL **x 8**

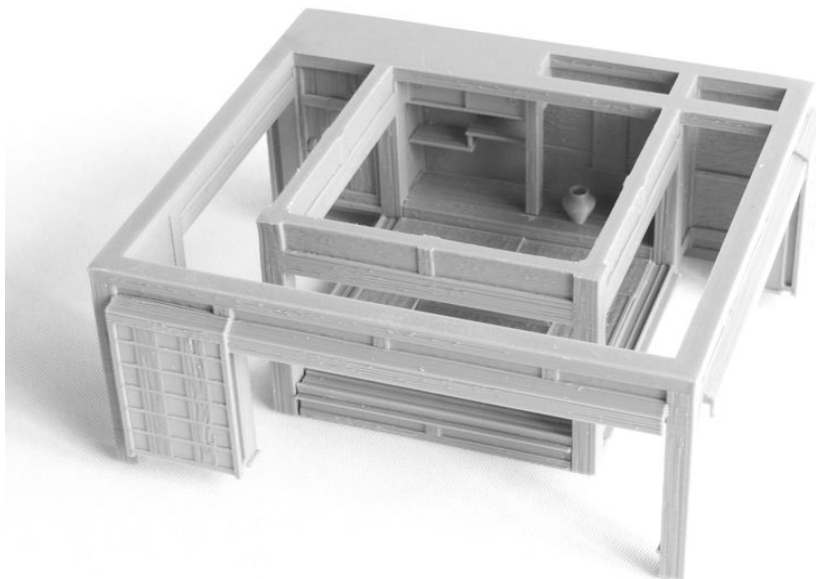


SAMURAI LORD'S HOUSE - GUESTHOUSE #2

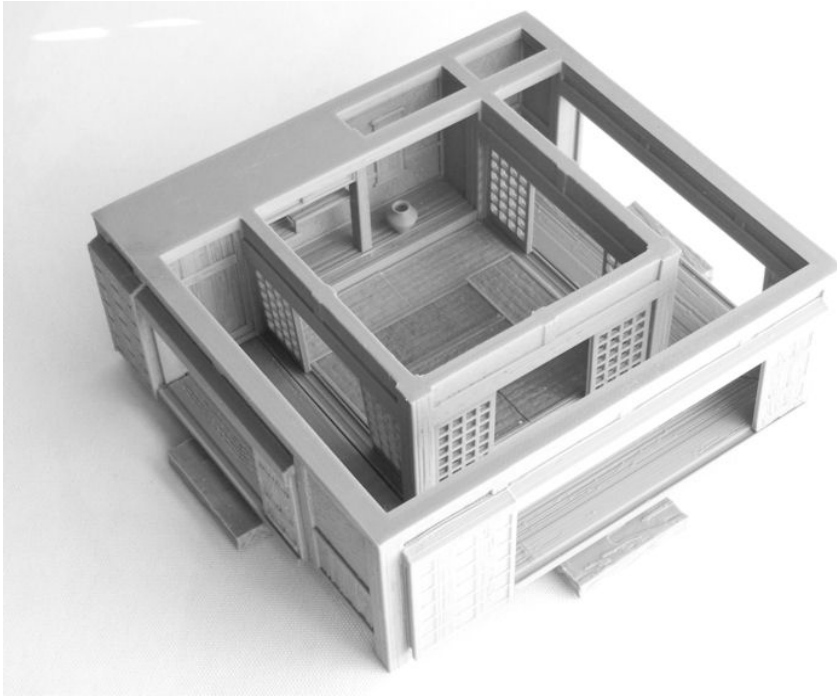
1. *Guesthouse2-base.STL*
Tatami.STL x **12**



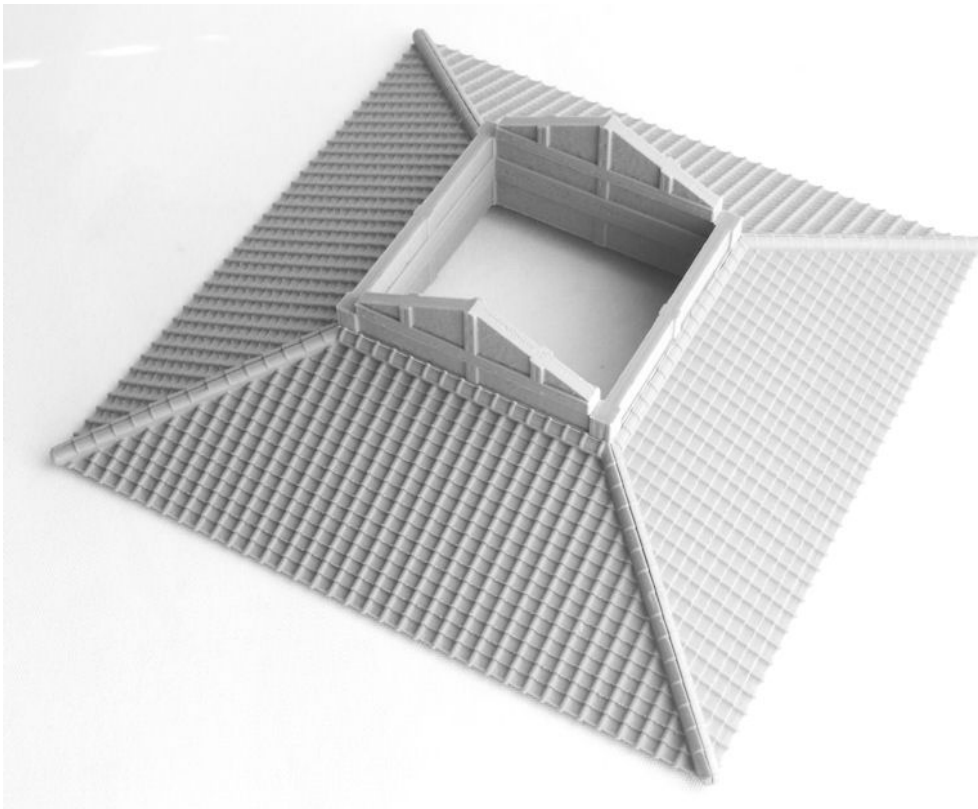
2. *Guesthouse2.STL*
Guesthouse2-shelf.STL



3. *Guesthouse2-floors.STL*
Guesthouse2-step.STL x 3



4. *Guesthouse2-upper.STL*
Guesthouse2-subroof.STL x 4



5. *Guesthouse2-roof.STL* x 2

Guesthouse2-ShojiDoor.STL x 8

Guesthouse2-ShutterDoor.STL x 16 (optional)

