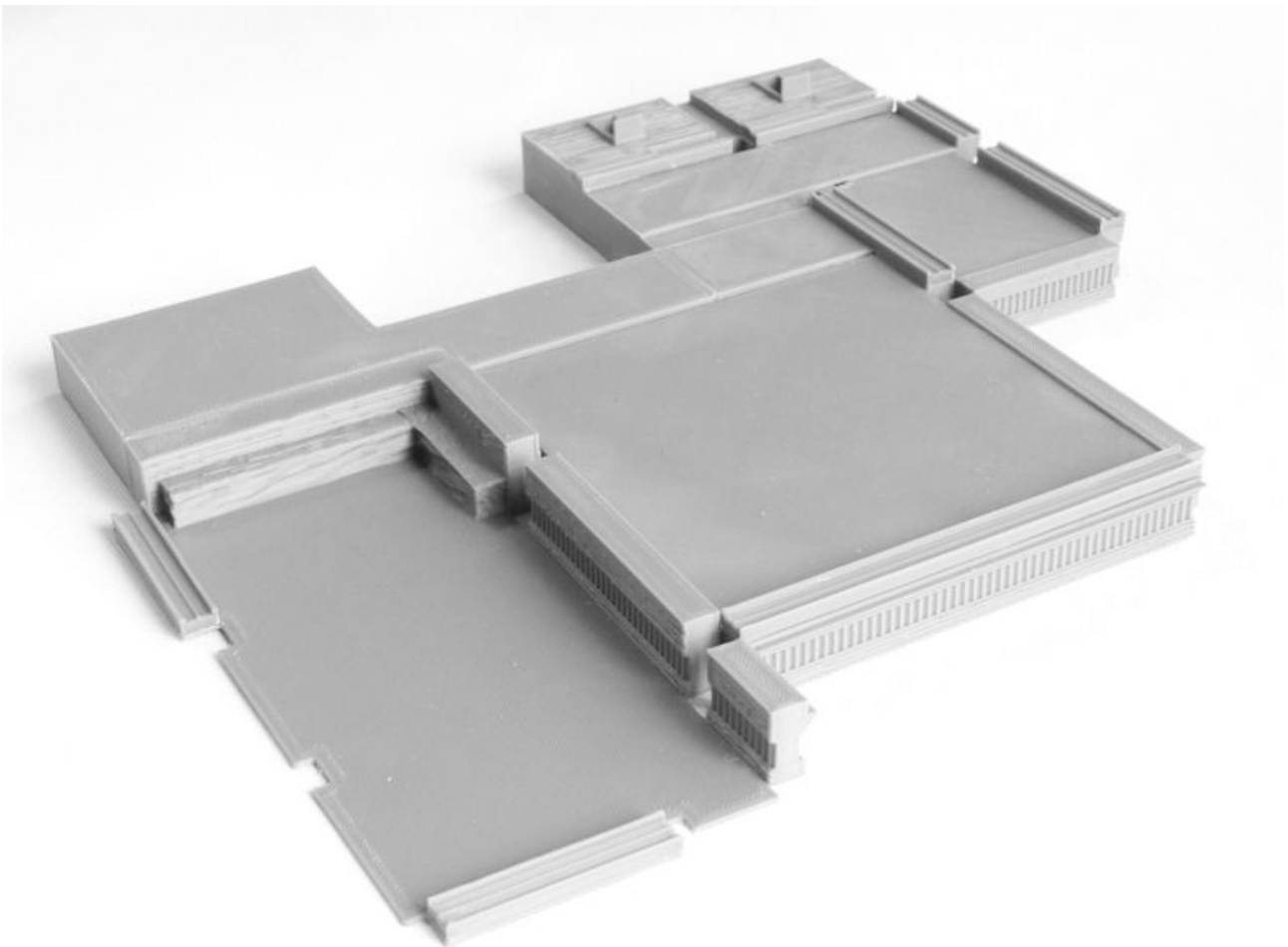


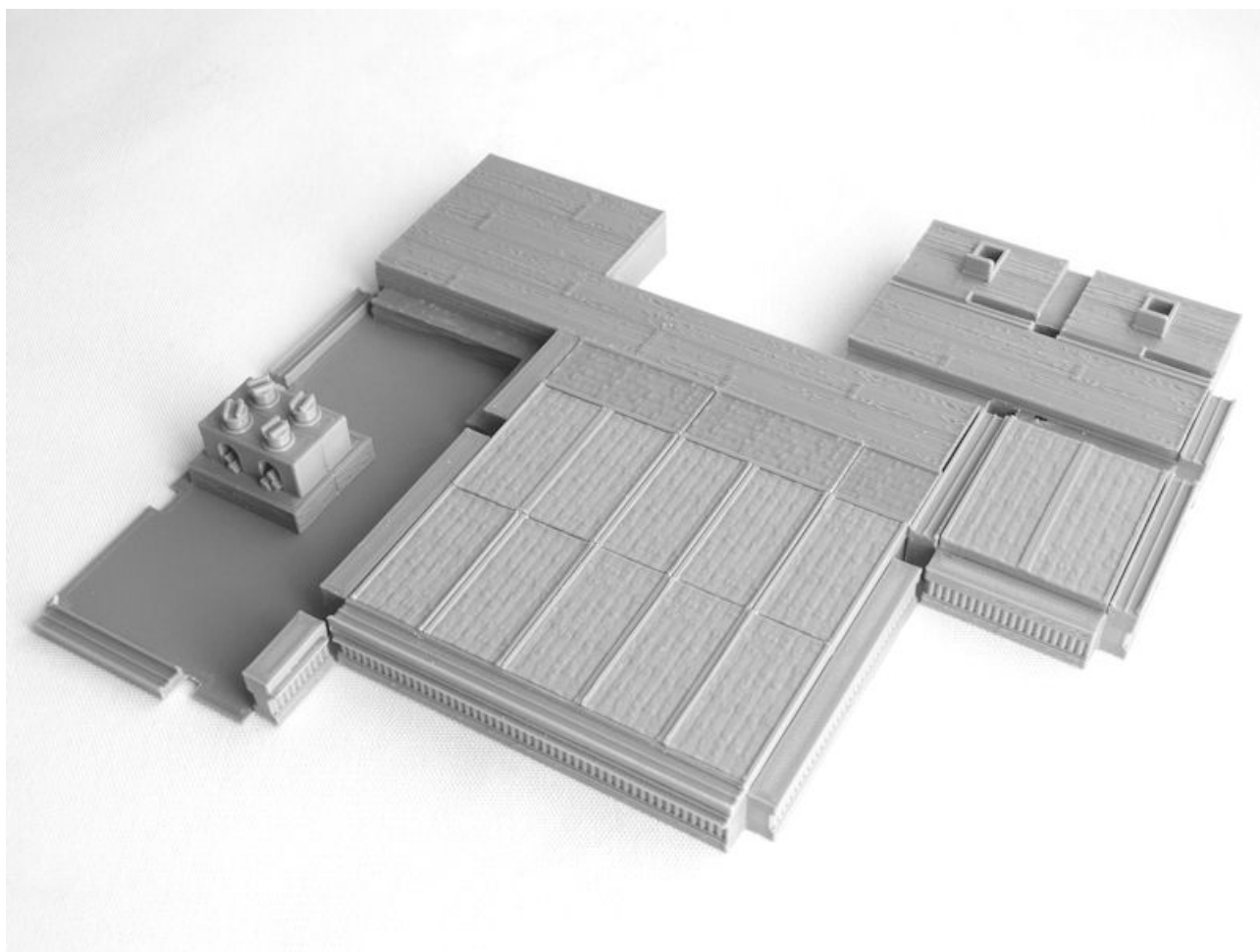


SAMURAI LORD'S HOUSE - KITCHEN

1. *Kitchen1F-baseA.STL*
Kitchen1F-baseB.STL
Kitchen1F-baseC.STL
Kitchen1F-baseD.STL
Kitchen1F-doorways.STL



2. *Kitchen1F-floors.STL*
Kitchen1F-oven.STL **x 2**
Tatami.STL **x 12**
Tatami_halfsize.STL

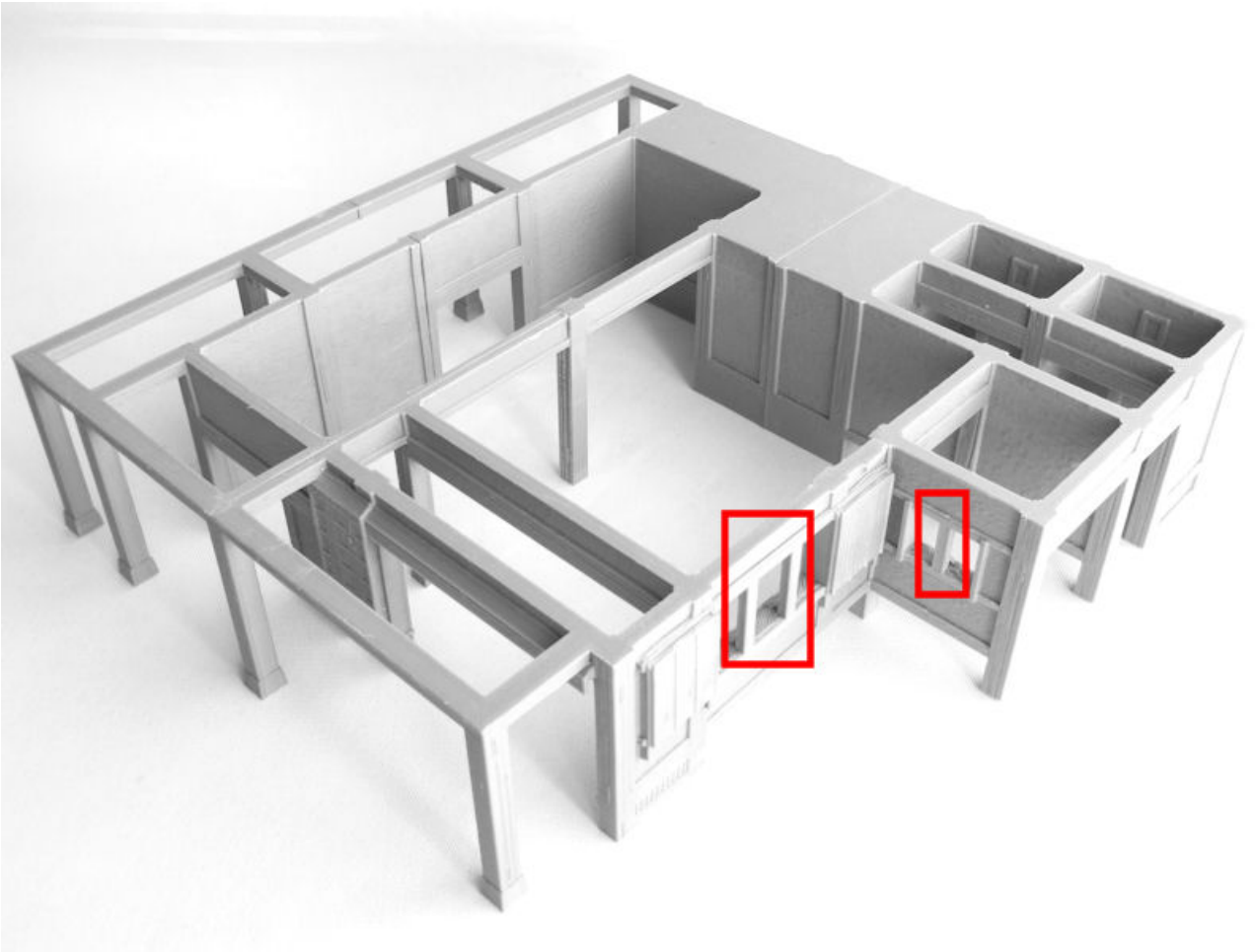


3. *Kitchen1F-partA.STL*

Kitchen1F-partB.STL (remove print supports, in red)

Kitchen1F-partC.STL

Kitchen1F-partD.STL (remove print supports, in red)



4. *Kitchen1F-stairs.STL*
Kitchen1F-windows.STL
Kitchen1F-toiletdoor.STL **x 2**

Kitchen1F-wooddoor.STL **x 4**
Kitchen-ShojiDoor.STL **x 8**



5. *Kitchen2F.STL* (remove window & door print supports, in red)

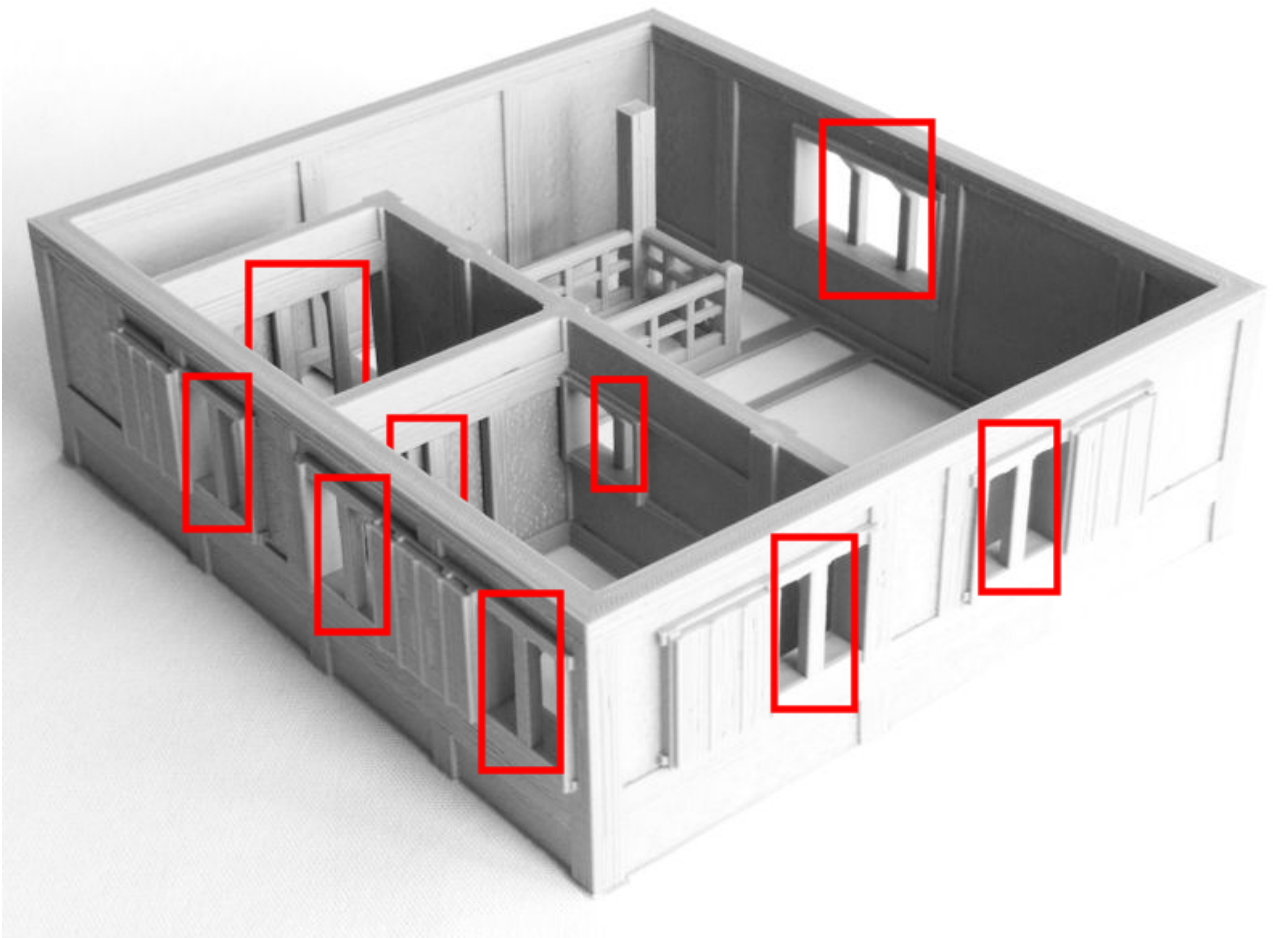
OR

Kitchen2F_partA.STL (for smaller printers)

Kitchen2F_partB.STL

Kitchen2F_partC.STL

Kitchen2F_partD.STL



- 6. *Kitchen2F-floors.STL*
- Kitchen2F-doorways.STL*
- Kitchen2F-door.STL* **x 2**
- Tatami.STL* **x 18**
- Tatami_halfsize.STL* **x 3**

- Kitchen2F-windows.STL*

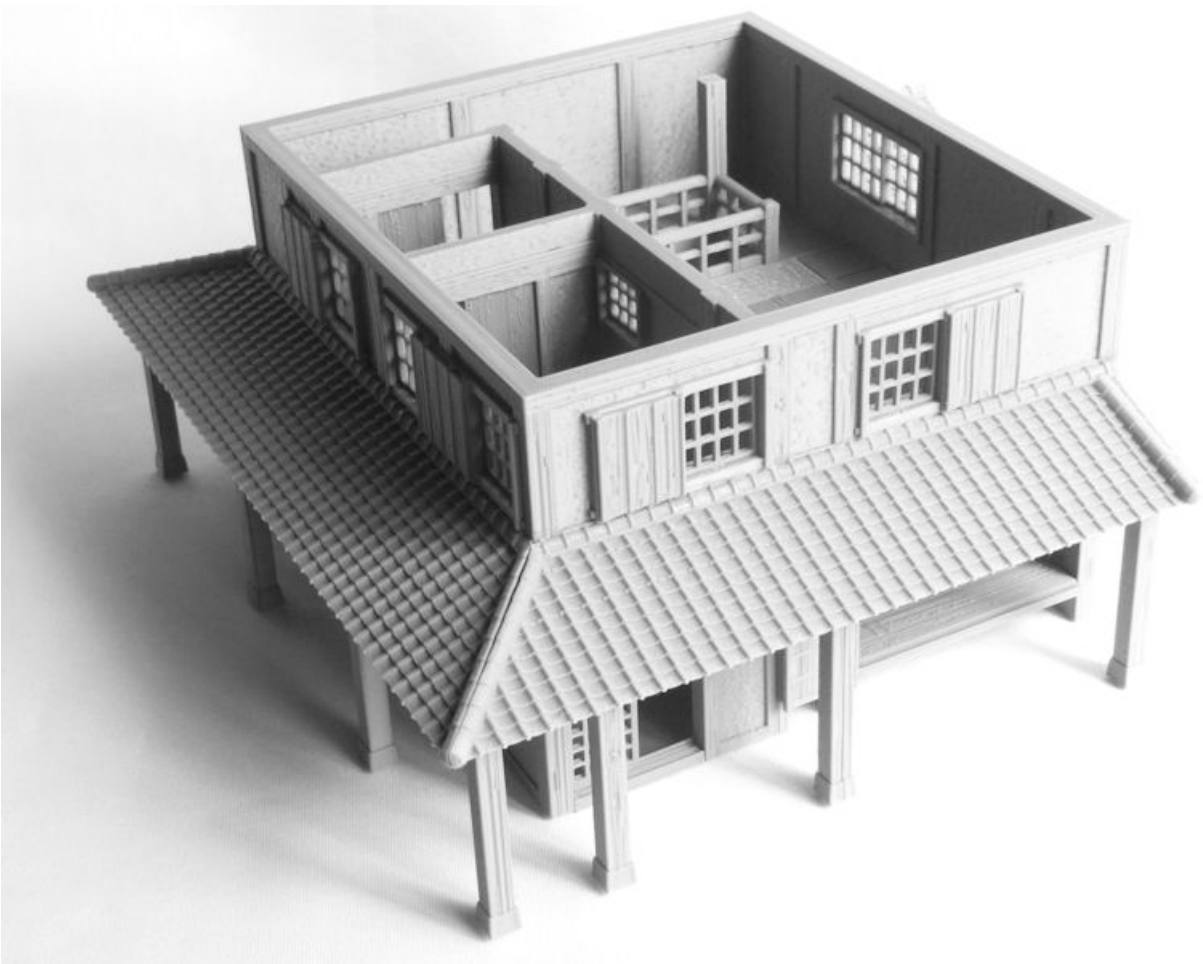


7. *Kitchen1F-roofA.STL*
Kitchen1F-roofB.STL
Kitchen1F-roofC.STL

OR

Kitchen1F-roofA_small_printers.STL (for smaller printers)
Kitchen1F-roofB_small_printers.STL
Kitchen1F-roofC_small_printers.STL

Kitchen1F-roof_for_standalone_building.STL (optional)



8. *Kitchen2F-roof.STL* x 2

OR

Kitchen2F-roof_partA.STL x 2 (for smaller printers)

Kitchen2F-roof_partB.STL x 2

