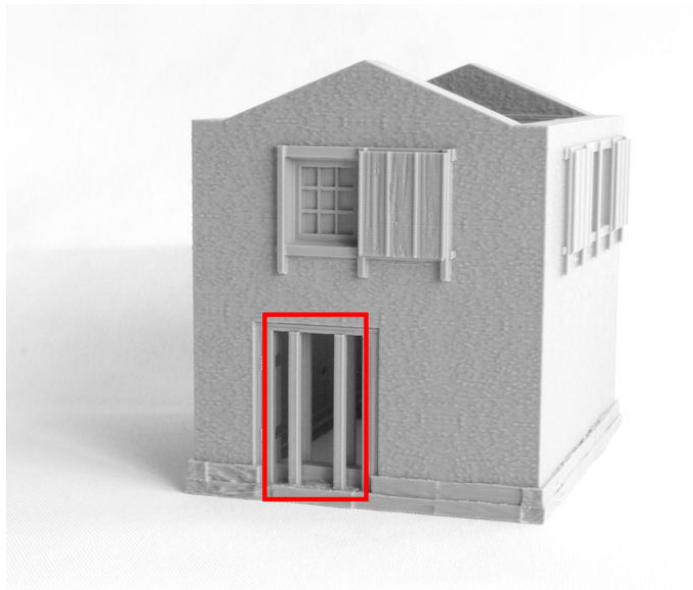


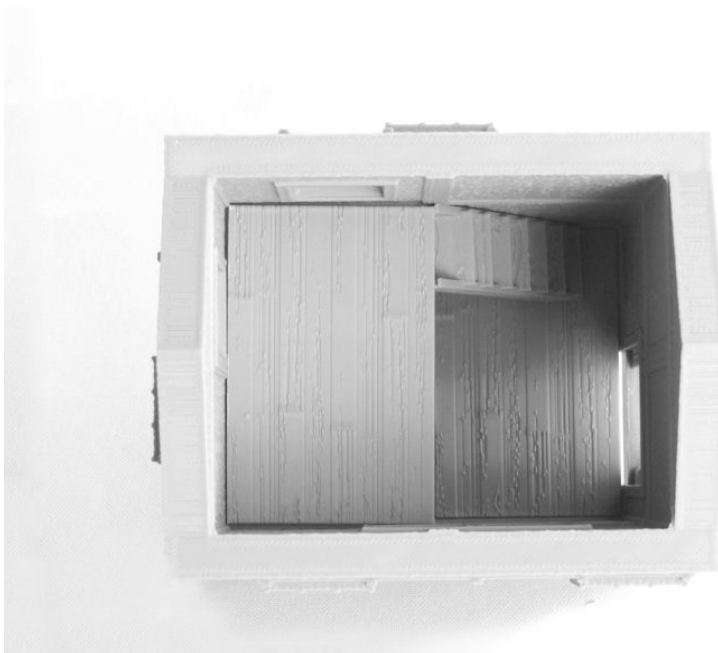


SAMURAI LORD'S HOUSE - KURA STOREHOUSES

1. *Storehouse2.STL* (remove print supports, in red)



2. *Storehouse2-stairs.STL*
Storehouse-floor.STL x 3



3. *Storehouse2-doors.STL*



4. *Storehouse2-roofs.STL*

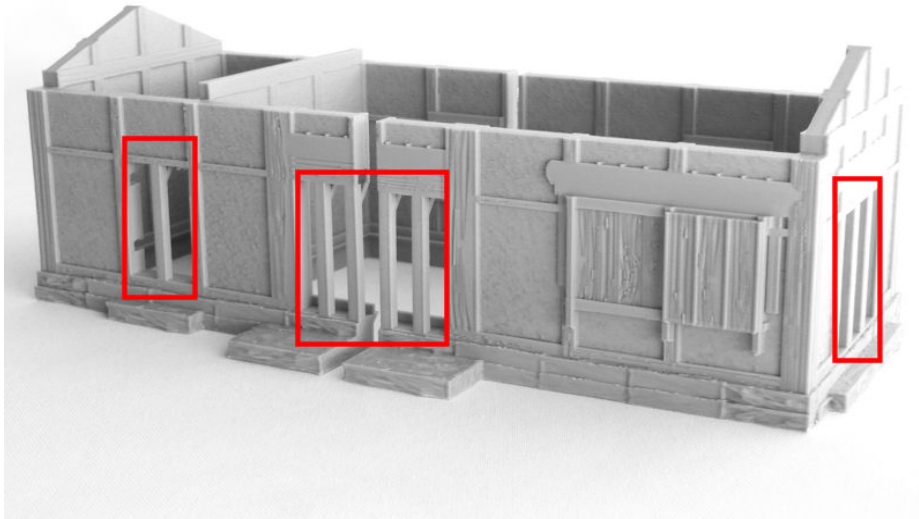


5. Storehouse-roof.STL x 2

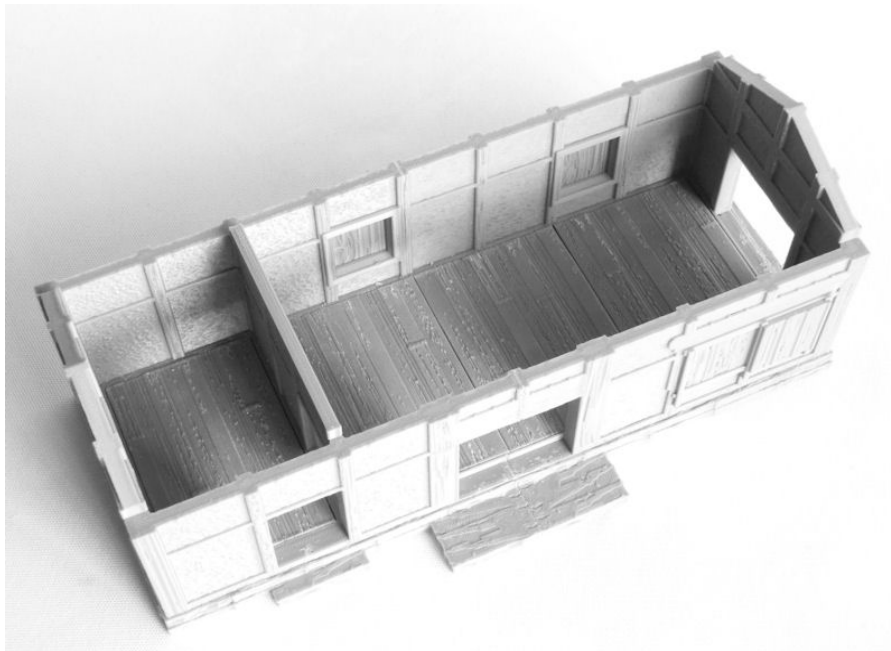


SAMURAI LORD'S HOUSE - LONG STOREHOUSE

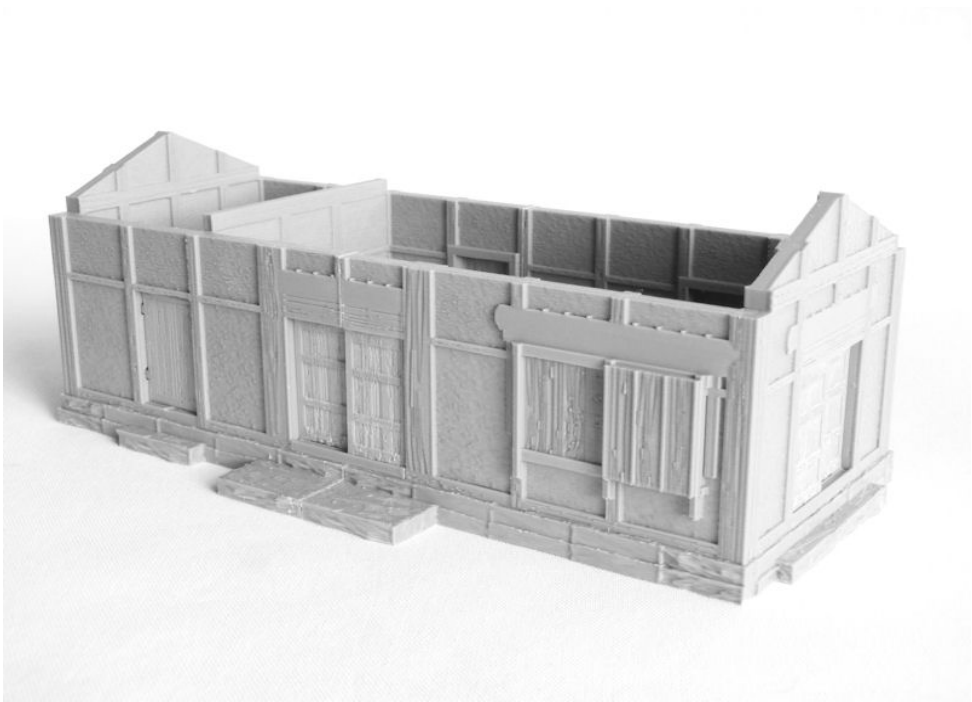
1. *LongStorehouse-part1.STL* (remove print supports, in red)
LongStorehouse-part2.STL (remove print supports, in red)



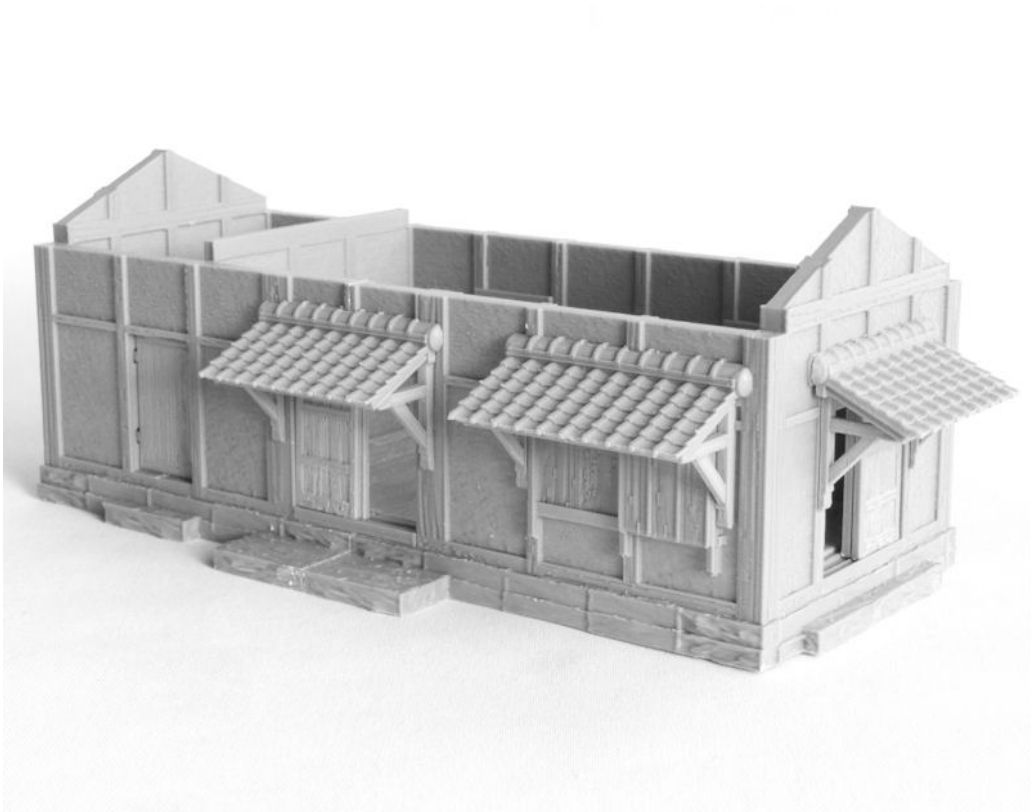
2. *LongStorehouse-floors.STL*



3. LongStorehouse-doors.STL



4. LongStorehouse-roofs.STL



5. LongStorehouse-roof.STL x 2

